



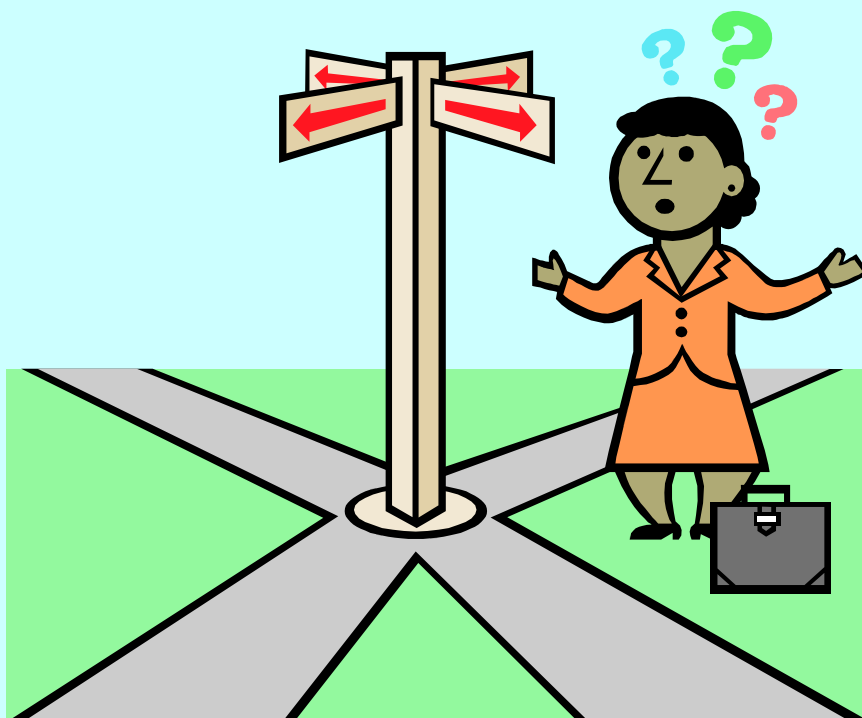
How Can Ashley House Services Help You?



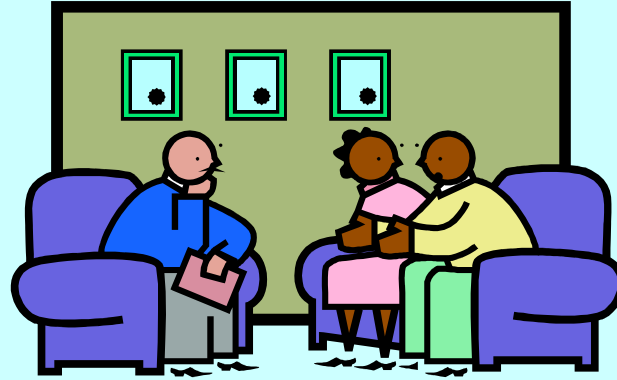
- Referrals to our support services
- Available treatment
- Excellent co-working



Making a Referral



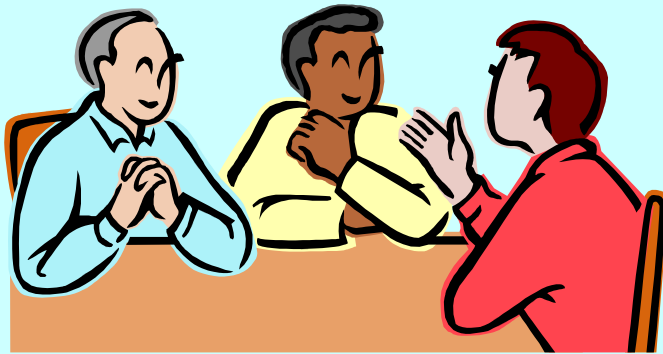
Treatment



Lets talk about Frank.....



Co-Working



Care-Coordination

- support services:
mental health

Keeping you informed



Making a referral.... it's simple!

- Ring us on **0845 601 1500**
- Complete the online referral:

www.ashleyhouse.halton.co.uk

- **Very basic information required
someone from Ashley House will ring
your agency to complete the referral
process**

Putting You First...

*Thank you for your time
we look forward to working with you*

Ashley house partnership group:

- Halton Borough Council
- 5 Boroughs Partnership NHS trust
- ARCH initiatives
- Addaction
- Cheshire Constabulary POPO Team

